

NOTES:

1. ELECTRICAL:

1.1 CONTACT CAPACITY 1.5 A @ 120 VAC.

1.2 CONTACT RESISTANCE 5 OHMS MAX.

2. OPERATE:

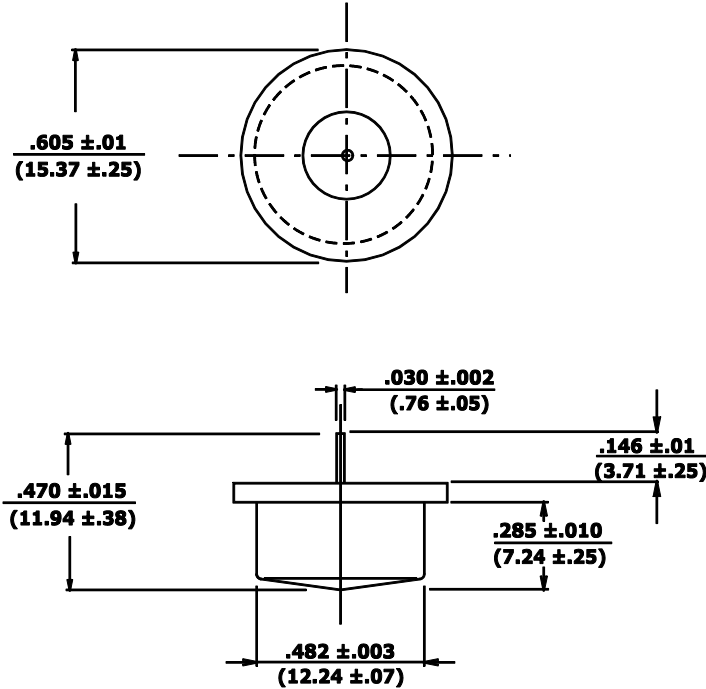
2.1 BREAK ANGLE BETWEEN 12 TO 18 DEG.

2.3 OPERATING TEMPERATURE -37 DEG. C TO 100 DEG. C.

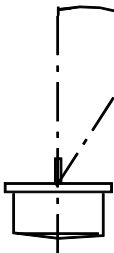
3. EXTERNAL FINISH:

3.1 TIN PLATED.

REV.	DATE	REVISION RECORD	DR.
B	06/11 1999	UPDATE TO ISO 9000	S.H.



**NORMALLY
CLOSED**



BREAK ANGLE BETWEEN 12 TO 18 DEG.

COMUS INTERNATIONAL

454 ALLWOOD RD. CLIFTON, NJ 07012 U.S.A. PH (973) 777-6900

TOLERANCES (except as noted) DECIMAL $\pm .01$ (.254) 2 Digit $\pm .005$ (.127) 3 Digit FRACTIONAL $\pm 1/64$ (.397) ANGULAR $\pm 1/2^\circ$	REF.:	SCALE: NONE	DRAWN BY: S.H.	APPROVED:
	DATE:			
TITLE: NC. TIP OVER SWITCH		DATE: 06/11/99	DRAWING NUMBER: CM1715-0	