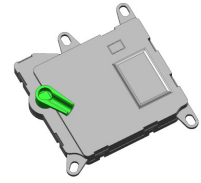


DC-SUBFRACTIONAL ACTUATOR

The Flatpack Line



SERIES 1.610.56.

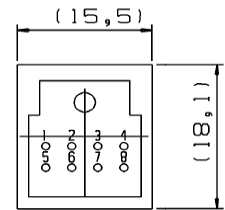
Rated Voltage - 12.6 VDC

Type Winding	Stall Torque (TMax) CW/CCW	Stall Current (Typical) CW/CCW	Operating Torque (Typical) CW/CCW	Operating Current (Typical) CW/CCW	Operating Speed (Typical) CW/CCW	No Load Current (Typical) CW/CCW	No Load Speed (Typical) CW/CCW	Starting Voltage (Typical) @ 40 Ncm	Breakaway Voltage (Typical)	SPL @ 10cm (Typical)	Pot Resistance ± 20%
	N-cm	mA	N-cm	mA	RPM	mA	RPM	VDC	VDC	dBA	kΩ
MAN	275	175	56	60	1.5	22	1.8	5.9	7.6	34	5
ATC	245	300	56	70	1.35	1.7	42.0	5.9	7.6	34	-----
2-Position	245	165	56	60	1.7	22	1.8	6.9	8.1	34	-----

Note: oz.-in. = Ncm x 1.4161

Electrical Connection & Control:

	PIN 1	PIN 2	PIN 3	PIN 4	PIN 5	PIN 6	PIN 7	PIN 8
MAN	POT (TP)	NC	CMD	POT (-)	NC	POT(+)	B+	GND
ATC	POT (TP)	NC	NC	NC	POT (-)	POT(+)	MTR(+)	MTR(-)
2-Position	NC	NC	NC	NC	NC	NC	MTR(+)	MTR(-)



Design Features:

- 3 point mounting
- Gear ratio of 1128.9:1
- Typical backlash of 3.0° under load
- EMI/RFI suppression
- Mechanical stops at different total travel angles:
 - Man: ± 45°
 - ATC: 0° - 90°
 - 2 Pos: ± 45°
- 40/+85 °C Operating
- Pot angle 180°, 90°
- Mating connector Tyco (Yazaki) E80B-14489-RA
- Typical Usage: Automotive HVAC
- Rated Operating Temperature Range
 - 40/+95 °C Exposure
 - 40/+85 °C Operating
- Light Weight of 130 grams
- 7 Spline output shaft

