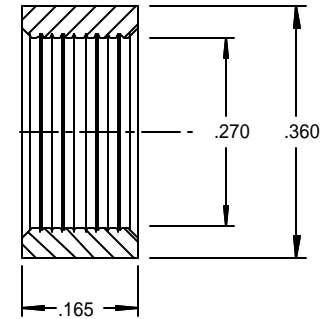
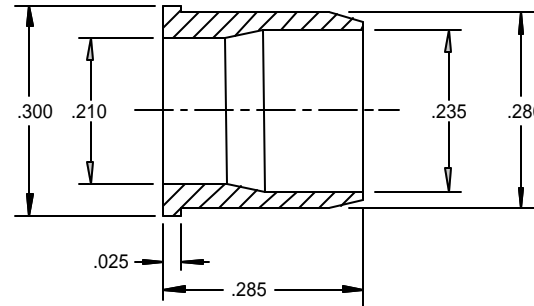
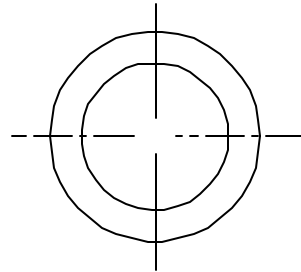




ACTUAL SIZE

CMC 285 MOUNT

RNG 268 RETAINER

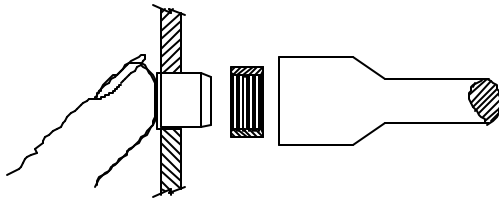


ORDERING CODES

MODEL CMC 285 BLK

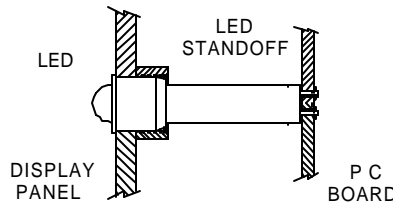
COLOR _____

CTP Clear
BLK Black



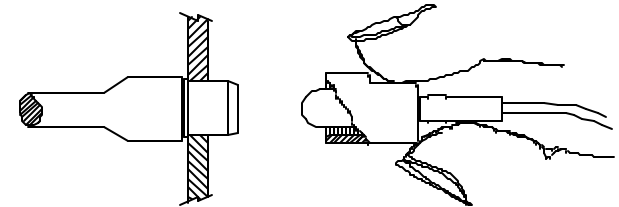
RETAINING RING INSTALLATION

Hold the mount tight to the panel using any suitable device which will not mark the panel surface. Press the ring into place using a 5/16" nut driver.



PCB TO PANEL MOUNTING

With the mount previously installed in the panel slide the PCB into position. The LED will protrude thru the panel mount completing the assembly



CONNECTOR INSTALLATION

Hold the mount tightly to the panel using any suitable device, (1/4" nut driver). Press the connector with LED into place.

NOTES:

MATERIAL: Mount - Polycarbonate
Retaining Ring - Polypropylene

MOUNTING: Mounts thru the front of panel.
Mounts in a .281 +.005 -.000" (7.2mm) hole.
Panel thickness 1/16" to 1/8"
Connectors: CNX 450 or CNX 310 series

LED: Mounts both bi and tri-lead LEDs.

See VCC brochure for information on CONXRITE connectors.

U.S. PAT. PEND.

TOLERANCES (EXCEPT AS NOTED)	REVISIONS				CLIPLITE® PANEL MOUNT VISUAL COMMUNICATIONS COMPANY, INC. 7920-G ARJONS DRIVE SAN DIEGO, CA 92126 U.S.A.		
	NO.	DESCRIPTION	DATE	BY			
DECIMAL ±.010	1				DRAWN BY JMS SCALE N/A MATERIAL SEE NOTES		
ANGLE	2						
DIAMETER	3				CHK'D _____ DATE 05/25/00		DRAWING NO. CMC 285 A
RADII	4				TRACED _____ APP'D _____		
	5						