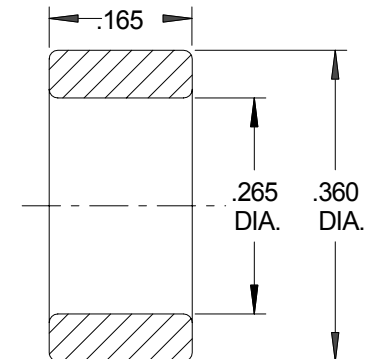
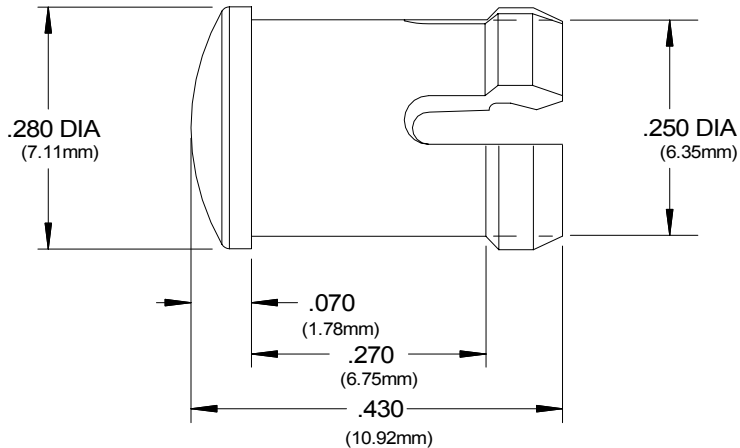
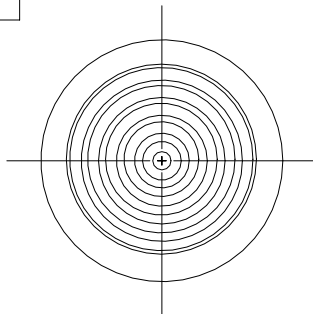
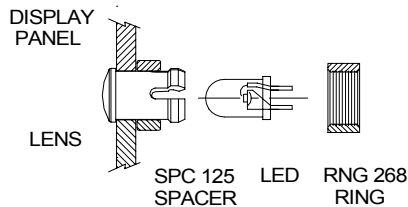




ACTUAL SIZE

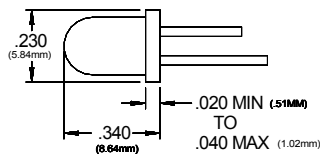


RNG 268  
(OPTIONAL)



**ASSEMBLY**  
Insert lens thru a .250" hole \* for thin panels, slide spacer on back of lense \* insert LED into lense \* locking ring for additional security only.

RECOMMENDED LED  
SIZE T-1 3/4



**ORDERING CODES**

MODEL CLB 300 RTP  
COLOR                     

RTP Red Transparent      BTP Blue Transparent  
ATP Amber Transparent    YTP Yellow Transparent  
GTP Green Transparent    CTP Clear Transparent

**NOTES:**

Material: Polycarbonate  
UL Rating: "Thermoplastic material used on a secondary circuit".

Design: Low profile lens using fresnel rings and striated lines.

Mounting: Mounts thru the front of panel. Mounting holes should be deburred but not chamfered.

Hole size - .250 ±.002 (6.35mm) hole on 3/8" centers  
Panel thickness 1/16" to 1/4"

For panel less than 3/16", SPC spacer is available  
Standard metal or plastic washer can be used to increase panel thickness if necessary.

U.S. & Foreign Pat. Issued & Pend.

TOLERANCES (EXCEPT AS NOTED)	REVISIONS			
	NO.	DESCRIPTION	DATE	BY
DECIMAL ±.010	1			
ANGLE ± 30'	2			
DIAMETER .003 TIR	3			
	4			
RADII .008 Max	5			

**CLIPLITE<sup>®</sup> CLB 300**

**VISUAL COMMUNICATIONS COMPANY, INC.**  
7920-G ARJONS DRIVE SAN DIEGO, CA 92126 U.S.A. (858) 549-6900

DRAWN BY	JMS	SCALE	5 X	MATERIAL	See Notes
CHK'D		DATE	10/25/95	DRAWING NO.	<b>CLB300A</b>
TRACED		APP'D			