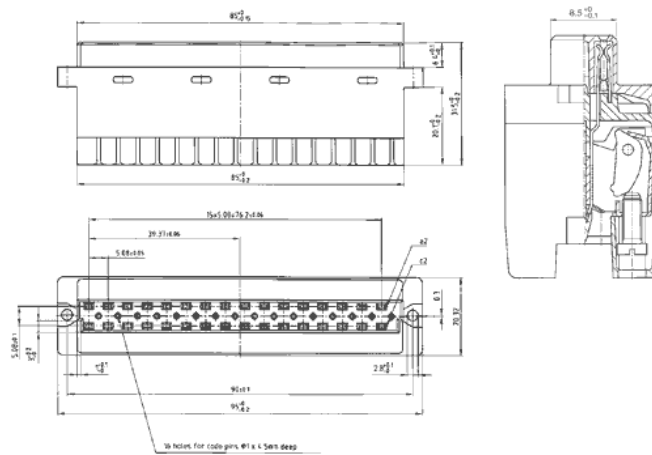


**Type D**  
Female connector  
with screw termination  
Contact spacing .200"

Directive 2002/95/EC  
„RoHS“  
Compliant

**TECHNICAL DATA**

Conductor size: AWG 24 . . . 16  
 Rated current: 6 A  
 Rated voltage: 300/250 V~  
 Moulding material: PBT GV grey  
 Operating temperature: -55° C to +120° C  
 Flammability: UL 94-V-O  
 Contact material: CuSn 6  
 Contact finish: Au over Ni  
 Screw connection: steel



**Part Numbers**

No. of Pos.	• = contact + = no contact	<b>Female connector with screw termination</b>
	Pos. 2 4 6 ... row c • • • • row a • • • •	