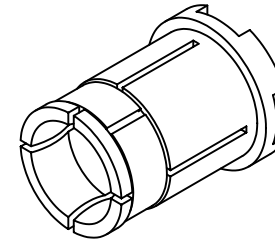


NOTES: UNLESS OTHERWISE SPECIFIED

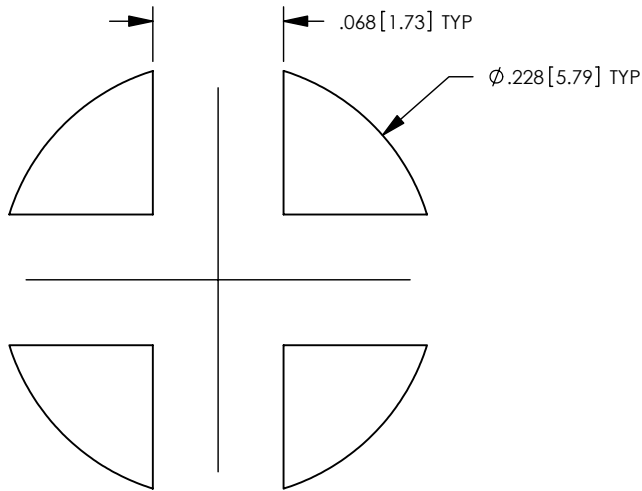
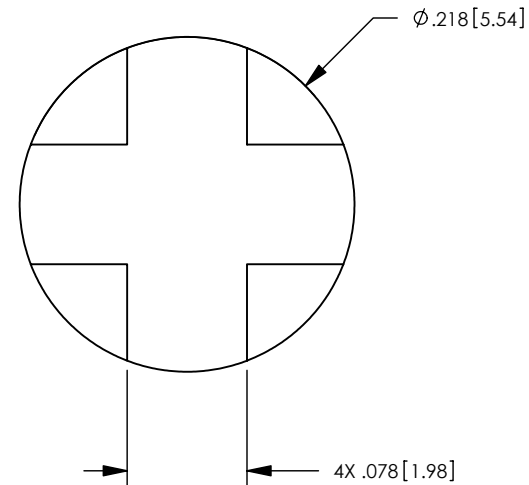
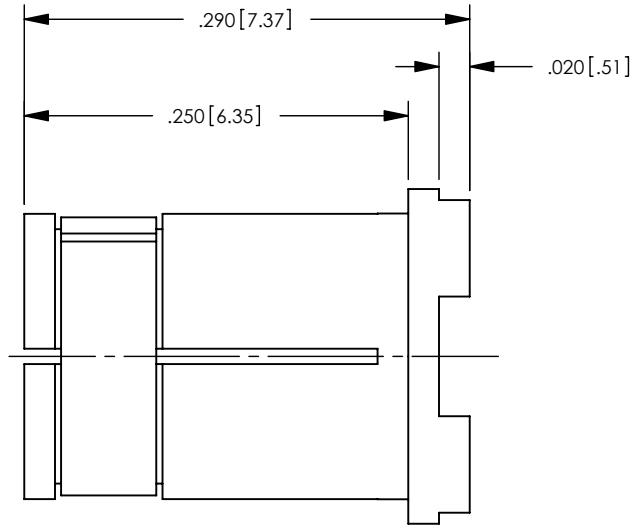
1. MATERIAL SPECIFICATIONS:
 BODY: BRASS PER ASTM B16
 RETAINING RING: COPPER ALLOY

2. FINISH SPECIFICATIONS:
 BODY: .000030 MIN GOLD PER ASTM B488 OVER
 .000080 MIN NICKEL PER AMS-QQN-290 (RoHS)
 RETAINING RING: .000100 MIN NICKEL PER AMS-QQ-N-290
 OVER COPPER FLASH PER ASTM B734 (RoHS)

| REV | DESCRIPTION | BY DATE | APPD |
|-----|--------------------|-----------------|------|
| N | REVISED PER ER7306 | CWB 04/14/08 | CWB |



ISOMETRIC VIEW
SCALE: 4:1



RECOMMENDED PAD LAYOUT

CATALOG P/N: 01127

| | | | | | |
|--|------------------|-----------------|--|---|---------|
| PER ASME Y14.5M-1994 UNLESS OTHERWISE SPECIFIED: DIMENSIONS ARE IN INCHES [MM] TOLERANCES: DECIMAL: .XX [X.X] ± .01 [0.3] .XXX [X.XX] ± .005 [0.13] .XXXX [X.XXX] ± .XXXX ANGLES: ± 2° SCALE: 8:1 | | | | Winchester Electronics Corporation 62 Barnes Industrial Road North Wallingford, Connecticut 06492 | |
| CUSTOMER DRAWING | | | POWER SNAP SURFACE MOUNT 40 AMPS | | |
| DRAWN EJW | DATE 06/10/99 | APPROVED JD | DATE 06/10/99 | A | SD01127 |
| APPROVED XXX | DATE XX/XX/XX | APPROVED XXX | DATE XX/XX/XX | | |
| | | | | SHT 1 OF 1 | REV N |